



SERIES
GSI-2 TOUCHSCREEN CONTROLLER

 **KIND LED**
GROW LIGHTS

USER MANUAL

WELCOME TO THE FAMILY

Thank you for choosing to grow with KIND LED. We are committed to providing you with the highest quality grow lights and industry leading customer support. If you have any questions regarding the set up or operation of your new KIND LED Grow Light Controller, our customer service team is ready to help.



GROW STRONG SUPPORT

PHONE: 1-855-448-4769

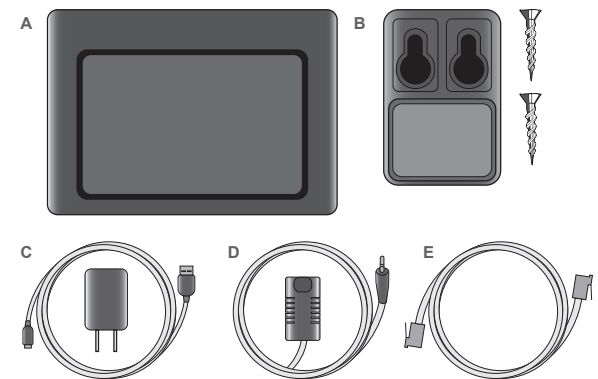
WEB: support.growstrongindustries.com

TABLE OF CONTENTS

OVERVIEW	3
SET UP	4-6
BEST PRACTICES	7-9

WHAT'S INCLUDED

- (A) GSI-2 Controller Interface
- (B) Wall Mount Plate & Hardware
- (C) Power Cable and Wall Adapter
- (D) Temp/Humidty Probe
- (E) RJ Communication Cable



OVERVIEW

DISPLAY GUIDE



BOTTOM & PROFILE VIEW



SET UP

1 MOUNTING

There are several ways that you can mount your GSI-2 Controller. Due to the convenient embedded magnetic backing, the unit will securely stick to any ferrous metal such as Iron or Steel.

Your GSI-2 also comes with a wall mount plate. This wall mount can be attached to the wall with two small screws and wall anchors (included). Once mounted, the wall mount will act as a metal surface to which the Controller can attach.

For mounting on the side of a canvas grow tent, simply hold the wall mount on the opposite side of the fabric from where you want to mount your Controller, then align the magnet on the back of the Controller to make contact with the wall mount through the fabric.

2 TURNING ON THE CONTROLLER

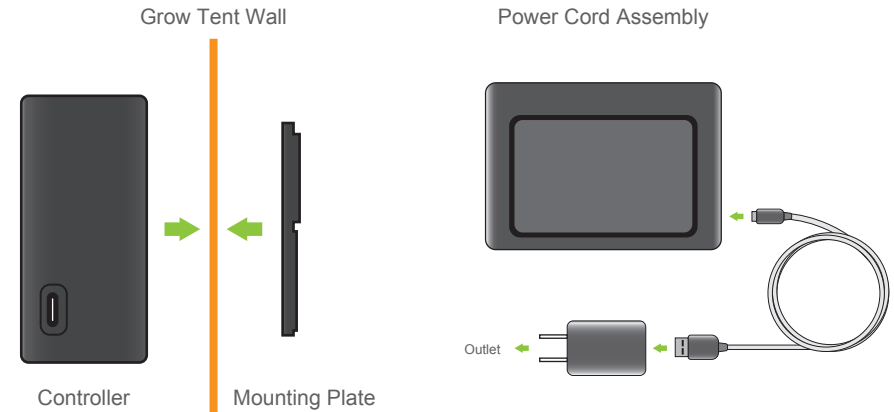
Place the USB end of the power cable into the wall adapter, then plug the wall adapter into any 120v wall outlet.

Plug the USB-C end of the cable into Power Cord Port on the right-hand side of the Controller.

You will see the Kind LED logo appear on the screen. Your Controller is now booting up.

Once booting up has completed, you will then see the home screen appear. On the screen you will see the following:

- Time of day
- Current lighting schedule represented on a line graph
- Current spectrum setting represented in 2, or 3 sliders
- Current temperature and humidity
- Power button
- Info button



3 CONNECTING THE CONTROLLER TO THE LIGHT

Plug the provided RJ14 cable into the RJ cable port located on the bottom of the Controller.

If you have multiple lights, connect the Controller to the left hand RJ port on the light, then run an additional cable from the right hand RJ Port to the following light as shown below.

The diagram shows two 'Kind LED' light fixtures connected to the GSI-2 Controller. The Controller is on the left, and the two light fixtures are on the right. Each light fixture has two RJ14 ports labeled 'Red + IR + UV'. The Controller's RJ14 port is connected to the left-hand RJ14 port of the first light fixture. A second RJ14 cable is connected between the right-hand RJ14 port of the first light fixture and the left-hand RJ14 port of the second light fixture, creating a daisy-chain connection.

4 CONNECTING THE TEMP/HUMIDITY SENSOR

Plug the Temp/Humidity cable into bottom of the Controller. Hang your Temp Humidity probe inside your grow room, about the same height as the grow light, but NOT in the direct path of light being emitted from the fixture.

The diagram shows the connection of the Temp/Humidity sensor. On the left, the GSI-2 Controller is shown with a cable plugged into its bottom. The cable leads to a small rectangular sensor probe. On the right, the sensor probe is shown hanging from a bracket inside a grow room. The probe is positioned at a height similar to the grow light fixture, but it is not in the direct path of the light being emitted from the fixture.

4

SET UP (cont.)

5 SETTING THE TIME

From the home screen, touch the Time Display to access clock settings.

Use the scroll wheels to scroll up or down until the desired date and time are displayed in the yellow section of each box.

Once completed touch the “set” button.
Your time is now set and you will return to the home screen.

6 SETTING YOUR LIGHT'S ON/OFF SCHEDULE

From the home screen, touch the Lighting Schedule Line Graph.

Set your desired “ON” time in the upper boxes, being sure to choose the correct “am/pm” setting.

Set your desired “OFF” time in the lower boxes, again being sure to choose the correct “am/pm” setting.

On the right side of the screen, you will see an option for setting a sunrise/sunset mode.

If sunrise/sunset mode is activated, when the schedule reaches your “ON” time, the light will slowly increase intensity from 0 to your desired setting over a selected duration of time. This duration can be set in 5, 10, 15, or 20 minute increments.

This mode will also dim your light down at the end of its “ON” phase until finally reaching 0 intensity at its “OFF” time.

NOTE: If “00” is chosen as the duration, your light will come on at 100% of the current spectrum settings when your lights reaches its “ON” time.

Once your desired settings have been entered, touch the “set” button to save and return to the home screen.

7 SETTING THE SPECTRUM

From the home screen, touch the Spectrum Reading Sliders.

On the spectrum setting page, select the number of channels your light has by tapping the box on the upper right. “2-Channel” applies to X220, X330, X420 and X750. “3-Channel” applies to the commercial X2(v1) fixture only.

On the spectrum drop down scroll menu, you will see options for Clone, Vegetation, Flower, Finish, and Custom.

Clone, Vegetation, Flower, and Finish are preset spectrum settings that have been optimized for each stage of growth. Once a preset is chosen (highlighted) touch “set” to save the spectrum and return to the home screen.

The Custom spectrum setting allows you to adjust each spectral channel to your desired intensity. Once “custom” is chosen (highlighted), you will be taken to a screen with spectrum intensity sliders. Slide the circle up or down to set the intensity of each channel and then press “set” to save the spectrum and return to the home screen.

8 SAFETY SHUTOFF

Your light is equipped with a safety feature that will dim and/or shut off your light in the event your room is overheating. To set these safety thresholds, touch the temp/humidity boxes on the right-hand side of the home screen.

It is recommended that the “dim” temp is set to the top end of a healthy grow environment temp range. If the grow environment reaches your selected “dim” temp, your grow light will dim but not turn off completely.

The “off” temp should be set at the absolute limit of a dangerous temp high point, at which point your light will turn off completely for safety.

Once these two setpoints are highlighted, touch “set” to save the setting and return to the home screen.

SET UP (cont.)

9 POWER BUTTON

The power button on the lower right hand of the home screen can be used for a visual representation of whether your light is in an “ON” phase (if green) or an “OFF” phase (if gray).

This button can also be used as an override to the current state of your light.

Please note that if you're turning “ON” from the “OFF” phase, we've built in a safety feature that will return the light to the “OFF” phase after 1 minute.

10 INFO BUTTON

By pressing the “INFO” button on the bottom of the home page, you will be taken to a screen with a QR code that can be scanned with a mobile device. Scanning the code will take you to the Grow Strong Industries website where a wealth of information and resources can be found.

Press the “HOME” to return to the home screen.